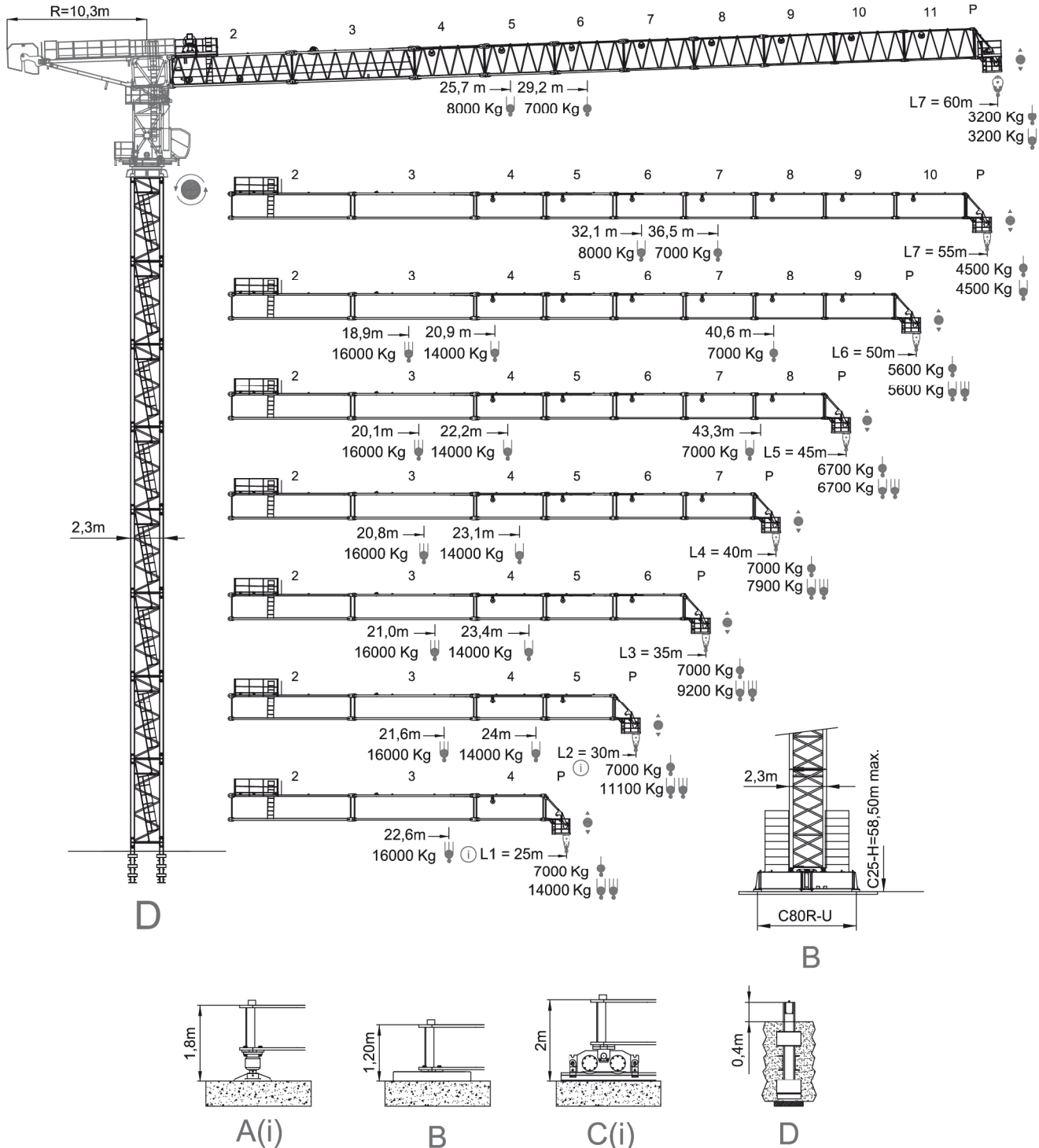


BKL System Sáez

SLH 300

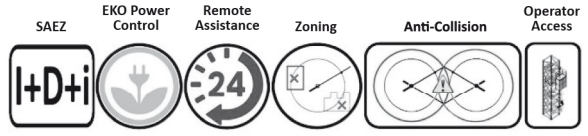
max. Ausladung:	60,00 m
Spitzenlast:	3.200 kg
max. Traglast:	16.000 kg
max. Hakenhöhe:	138,40 m



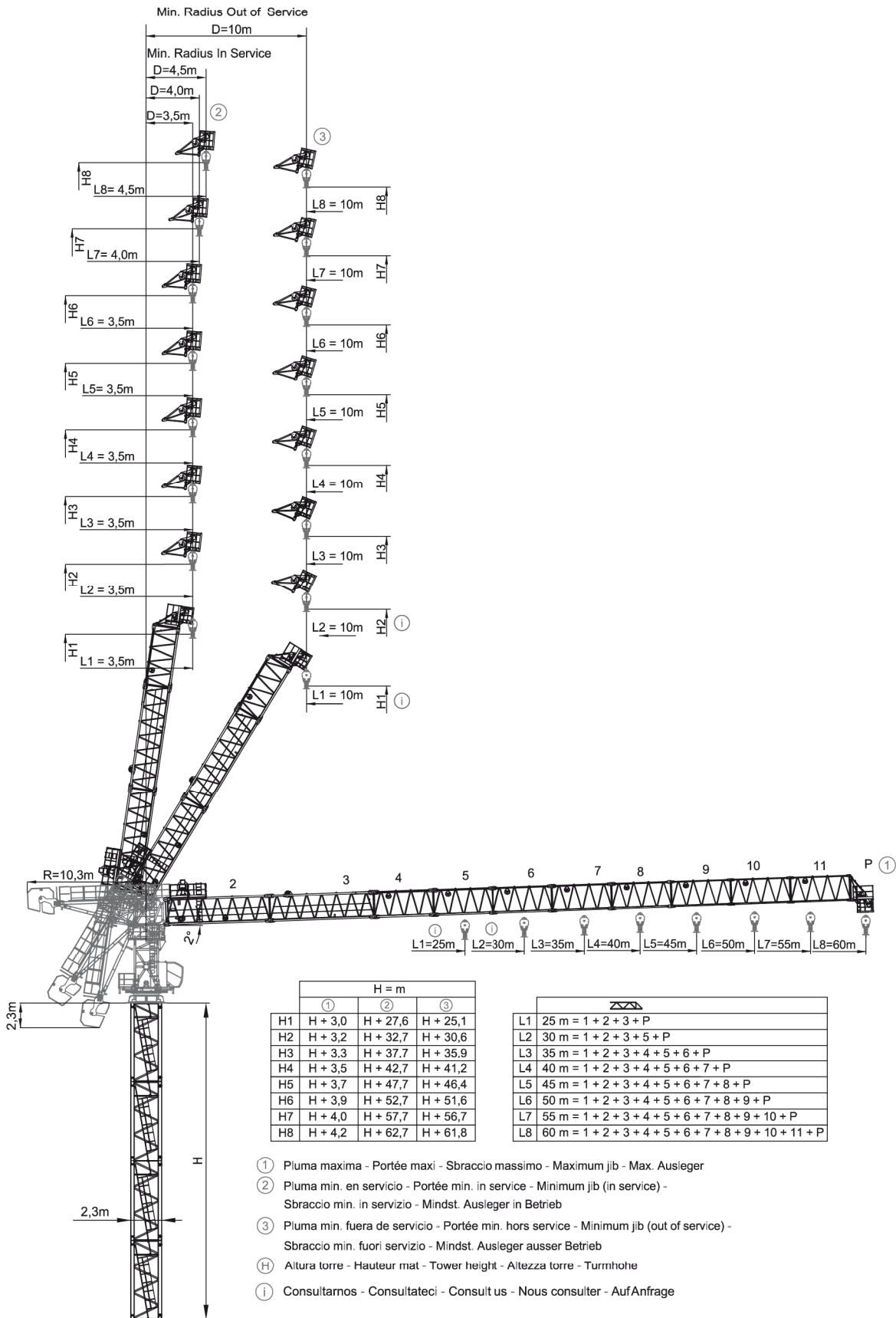
ⓘ Consultarnos - Consultateci - Consult us - Nous consulter - Auf Anfrage - советоваться



DIN/FEM **CE**
EN 14439-FEM 1005- C25



Angaben gemäß Hersteller. Angaben und Informationen ohne Gewähr. Irrtum und Änderung vorbehalten. Haftung ausgeschlossen. Juni 2026.



Angaben gemäß Hersteller. Angaben und Informationen ohne Gewähr. Irrtum und Änderung vorbehalten. Haftung ausgeschlossen. Juni 2026.

Lastkurven / Load diagrams

60 m



Max. load	10	15	20	25	29,2	35	40	45	50	55	60	m
29,2m	7000	7000	7000	7000	7000	5789	5015	4414	3932	3538	3200	Kg
Max. load	10	15	20	25,7	30	35	40	45	50	55	60	m
25,7m	8000	8000	8000	8000	6820	5789	5015	4414	3932	3538	3200	Kg

55 m



Max. load	10	15	20	25	30	36,5	40	45	50	55	m
36,5m	7000	7000	7000	7000	7000	7000	6358	5608	5007	4500	Kg
Max. load	10	15	20	25	32,1	35	40	45	50	55	m
32,1m	8000	8000	8000	8000	8000	7323	6358	5608	5007	4500	Kg

50 m



Max. load	10	15	20	25	30	35	40,6	45	50	m
40,6m	7000	7000	7000	7000	7000	7000	7000	6290	5600	Kg
Max. load	10	15	20,9	25	30	35	40	45	50	m
20,9m	14000	14000	14000	11640	9635	8200	7126	6290	5600	Kg
Max. load	10	18,9	20,9	25	30	35	40	45	50	m
18,9m	16000	16000	14000	11640	9635	8200	7126	6290	5600	Kg

45 m



Max. load	10	15	20	25	30	35	43,3	45	m
43,3m	7000	7000	7000	7000	7000	7000	7000	6700	Kg
Max. load	10	15,7	22,2	25	30	35	40	45	m
22,2m	14000	14000	14000	12430	10290	8762	7618	6700	Kg
Max. load	10	20,1	22,2	25	30	35	40	45	m
20,1m	16000	16000	14000	12430	10290	8762	7618	6700	Kg

40 m



Max. load	10	15	20	25	30	35	40	m
40m	7000	7000	7000	7000	7000	7000	7000	Kg
Max. load	10	15	23,1	25	30	35	40	m
23,1m	14000	14000	14000	12939	10730	9125	7900	Kg
Max. load	10	20,8	23,1	25	30	35	40	m
20,8m	16000	16000	14000	12939	10730	9125	7900	Kg

35 m



Max. load	10	15	20	25	30	35	m
35m	7000	7000	7000	7000	7000	7000	Kg
Max. load	10	15	23,4	25	30	35	m
23,4m	14000	14000	14000	13106	10853	9200	Kg
Max. load	10	21	23,4	25	30	35	m
21,0m	16000	16000	14000	13106	10853	9200	Kg

30 m



Max. load	10	15	20	25	30	m
30m	7000	7000	7000	7000	7000	Kg
Max. load	10	15	24	25	30	m
24m	14000	14000	14000	13480	11100	Kg
Max. load	10	21,6	24	25	30	m
21,6m	16000	16000	14000	13480	11100	Kg








25 m


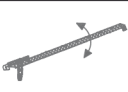

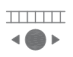







Max. load	10	15	20	25	m
25m	7000	7000	7000	7000	Kg
Max. load	10	15	20	25	m
25m	14000	14000	14000	14000	Kg
Max. load	10	15	22,6	25	m
22,6m	16000	16000	16000	14000	Kg



Angaben gemäß Hersteller. Angaben und Informationen ohne Gewähr. Irrtum und Änderung vorbehalten. Haftung ausgeschlossen. Juni 2026.

Antriebe / Mechanisms

75 Hp (55Kw) INV													
		D-Max 520m 		H. 520m Ø20		D-Max 520m 		H. 260m Ø20		D-Max 520m 		H. 172m Ø20	
	m/min	0—36	0—50	0—61	0—160	0—18	0—25	0—30,5	0—80	0—16	0—17	0—21	0—54
	Kg	7000	5000	4000	800	14000	10000	8000	1600	16000	15000	12000	2400
	Kw	55	55	55	55	55	55	55	55	55	55	55	55

			
		2,5 min. de 2° a 85° 2,5 minutes from 2° to 85°	
	Kw	30	
	r.p.m.	0—0,8	
	Kw	2 x 11	
	m/min	12—24	
	Kw	4 x 3	

- * Opcional / Optional / Opzionale
-  Elevación / Hoisting / Heben / Levage / Sollevamento
-  Elevación de pluma / Luffing / Ausleger-Einziehen / Releverage / Brandeggio
-  Orientación / Slewing / Schwenken / Orientation / Rotazione
-  Traslacion / Travelling / Schienenfahren / Translation / Traslazione
-  Cable / Rope / Seil / Câble / Fune

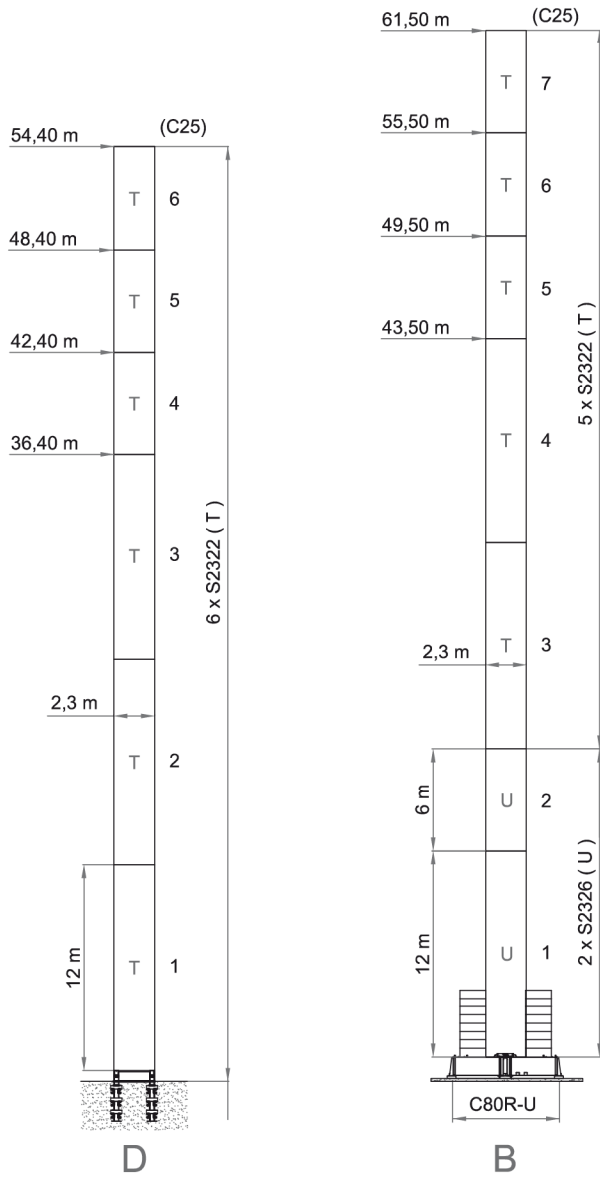
		400 V 50 Hz 60 Hz	100 m 4 x 50 mm ²
2000/14/CEE 2005/88/CEE	2006/95 /CEE		

 55 Kw	107 Kw	215 kVA
---	--------	---------

OBENDREHER

FEM 1005-C25/EN 14439 - Maste Eckdrücke / Mastreactions

T = S2322 16/16 M45L
U = S2326 16/16 M52L



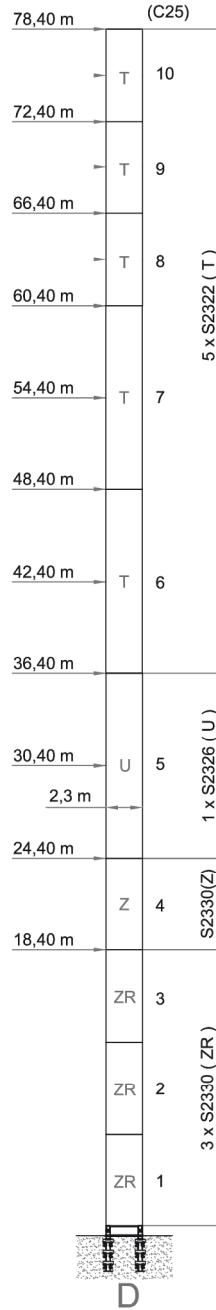
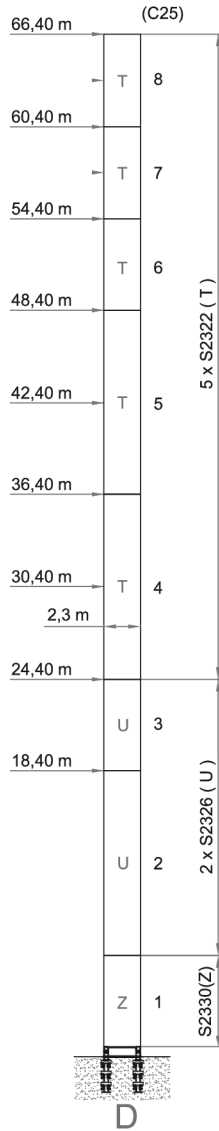
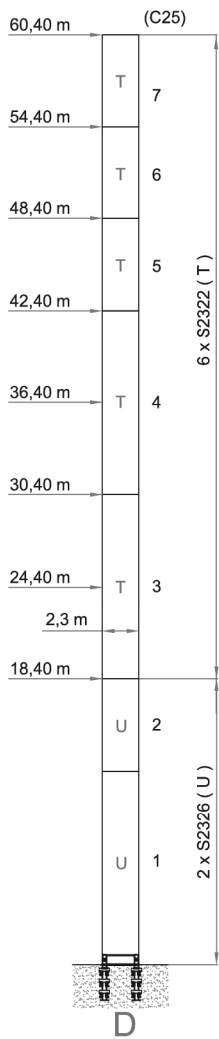
max. H(m) (m)	max. H(m)	
	FEM 1005 C25	
25	54,40	
30	48,40	
35	48,40	
40	42,40	
45	42,40	
50	42,40	
55	36,40	
60	36,40	

max. H(m) (m)	max. H(m)	
	FEM 1005 C25	
25	61,50	
30	55,50	
35	55,50	
40	55,50	
45	49,50	
50	49,50	
55	43,50	
60	43,50	

Angaben gemäß Hersteller. Angaben und Informationen ohne Gewähr. Irrtum und Änderung vorbehalten. Haftung ausgeschlossen. Juni 2026.

FEM 1005-C25/EN 14439 - Maste Eckdrücke / Mastreactions

T = S2322 16/16 M45L
U = S2326 16/16 M52L
Z = S2330 16/24 M52L
ZR = S2330R 24/24 M52L



OBENDREHER

max. H(m) (m)	max. H(m)	
	FEM 1005 C25	
25	60,40	
30	60,40	
35	60,40	
40	54,40	
45	54,40	
50	54,40	
55	48,40	
60	48,40	

max. H(m) (m)	max. H(m)	
	FEM 1005 C25	
25	66,40	
30	66,40	
35	60,40	
40	60,40	
45	60,40	
50	60,40	
55	54,40	
60	54,40	

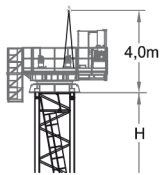
max. H(m) (m)	max. H(m)	
	FEM 1005 C25	
25	78,40	
30	78,40	
35	72,40	
40	72,40	
45	72,40	
50	66,40	
55	66,40	
60	66,40	

Angaben gemäß Hersteller. Angaben und Informationen ohne Gewähr. Irrtum und Änderung vorbehalten. Haftung ausgeschlossen. Juni 2026.

Montage - Montage

**1st STEP
OPTION A**

 TURNTABLE
CABIN SUPPORT

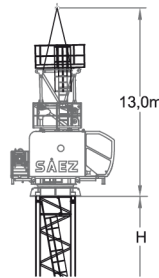
13,900 KG

**2nd STEP
OPTION A**

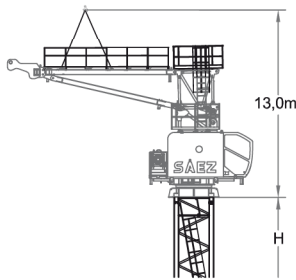
 TOWER TOP SECTION
JIB 1 SECTION

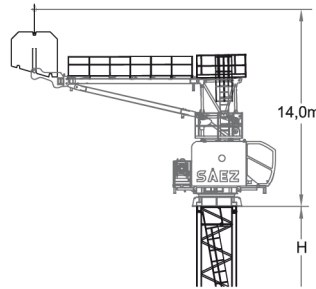
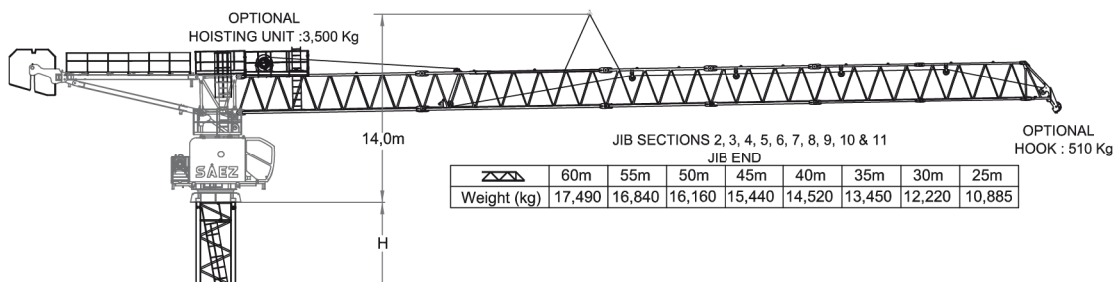
14,400 KG

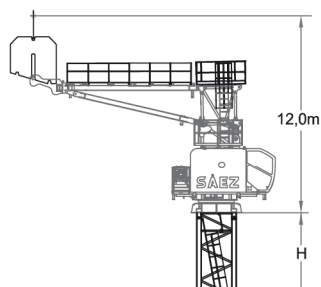
**1st & 2nd STEP
OPTION B**

 TURNTABLE
TOWER TOP SECTION
CABIN SUPPORT
JIB SECTION 1

28,300 KG

3rd STEP

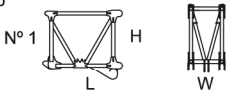
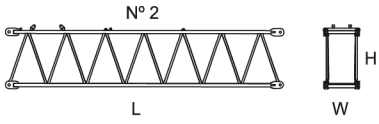
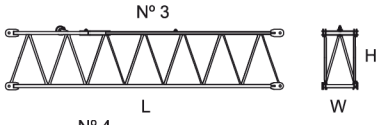
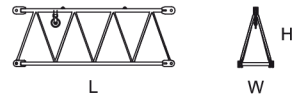
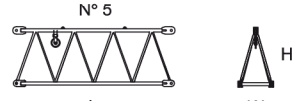
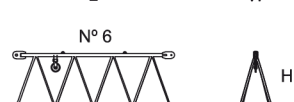

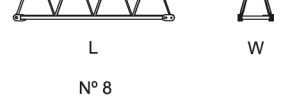

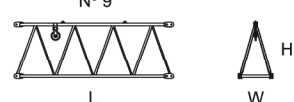
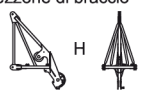
 COUNTERJIB
5,500 KG

4th STEP

 2 x COUNTERJIB BALLAST
2 x 7000 KG

5th STEP

6th STEP

 3 x COUNTERJIB BALLAST
3 X 7000 KG


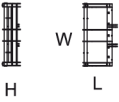
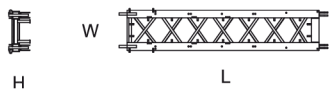
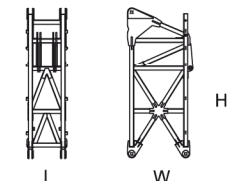
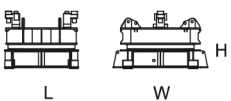
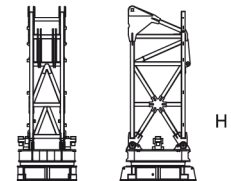
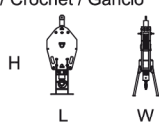
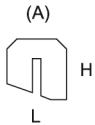
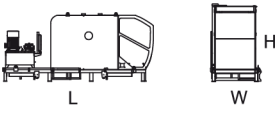
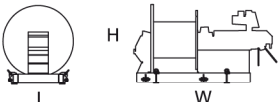
Angaben gemäß Hersteller. Angaben und Informationen ohne Gewähr. Irrtum und Änderung vorbehalten. Haftung ausgeschlossen. Juni 2026.

Abmessungen und Transport / Dimensions and transport

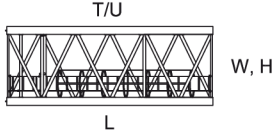

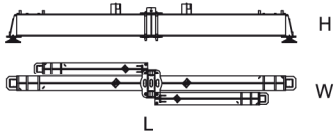
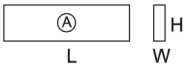

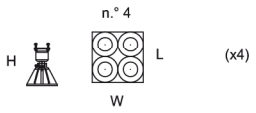


	L(m)	W(m)	H(m)	Peso(Kg)
<p>Pluma tramo primero / Jib heel section / Ausleger-Anlenkstück / Pied de fleche / Settore articolato di braccio</p> <p>N° 1</p> 	3,10	1,45	2,75	3860
<p>Elemento intermedio de pluma / Intermediate jib section / Ausleger-Zwischenstück / Élément interm. de fleche / Spezzone di braccio</p> <p>N° 2</p>  <p>N° 3</p>  <p>N° 4</p>  <p>N° 5</p>  <p>N° 6</p>  <p>N° 7</p>  <p>N° 8</p>  <p>N° 9</p>  <p>N° 10,11</p> 	9,02	1,35	2,46	4320
	9,02	1,35	2,35	3820
	5,25	1,35	2,35	1580
	5,25	1,35	2,35	1245
	5,21	1,35	2,35	1150
	5,21	1,35	2,35	1030
	5,18	1,35	2,35	965
	5,16	1,35	2,35	705
	5,16	1,35	2,35	650
<p>Elemento final de pluma / Intermediate jib section / Ausleger-Zwischenstück / Élément interm. de fleche / Spezzone di braccio</p> 	1,81	1,27	2,70	450

OBENDREHER

BKL SYSTEM SÁEZ SLH 300
300 mt

	L(m)	W(m)	H(m)	Peso(Kg)	
Cesto Contrapluma / Counter-jib basket / Gegenausleger / Contre-fleche / Controbraccio 	1,80	4,22	0,96	1960	
Contrapluma / Counter-jib / Gegenausleger / Contre-fleche / Controbraccio 	5,52	2,00	0,67	3450	
Unidad de rotacion / Complete slewing unit / Drehbühne / Orientation / Rotazione   	2,95	1,65	7,25	14400	
Gancho / Hook / Lasthaken / Crochet / Gancio 	0,5	0,2	1,6	510	
Bloque de contrapeso / Counterweight blocks / Gegengewichtsblöcke / Bloc de contrepoids / Blocco di contrappeso 	A	2,2	0,51	2,2	7000
Cabina y soporte / Cabin and platform / Kabine und wartungs / Cabine et support / Cabina e supporto 	5,2	1,75	2,40	3400	
Equipo de elevacion / Hoist winch / Heben / Levage / Sollevamento / подъёмник 	2,75	1,6	1,6	3500	

Angaben gemäß Hersteller. Angaben und Informationen ohne Gewähr. Irrtum und Änderung vorbehalten. Haftung ausgeschlossen. Juni 2026.

	L(m)	W(m)	H(m)	Peso(Kg)	
Elemento de torre S23 / Tower section S23 / Turmstück S23 / Elément de mât S23 / Elemento di torre S23 / Башенные секции S23					
	T	3	2,27	2,29	3250
	T	6	2,27	2,29	4780
	T	12	2,27	2,29	9000
	U	3	2,31	2,34	4134
	U	6	2,31	2,34	6200
	U	12	2,31	2,34	11180
	Z	6	2,31	2,34	7825
	ZR	6	2,31	2,34	7925
Elemento de empotre / Foundation anchor / Fundamentanker / Pieds de scellement / El anegare / Анкерные крепления					
	Y 4/4 D73	0,5	0,5	2	370
	YR 4/4 D73	0,5	0,5	2	500
	S75R16/22	0,5	0,5	2	1400
	S75R16/26	0,5	0,5	2,4	2100
	S75R16/30	0,5	0,5	2	2972
	S75R24/30	0,5	0,5	2	3600
	DIMA	2,31	2,34	0,8	1650
	Base C80R-U / base C80R-U / Hauptträger für fundamentkreuz C80R-U / Base C80R-U / Base C80R-U				
		11,8	2,38	1,40	17200
Bloque lastre de base / Base ballast block / Grundballastblöcke / Bloc de lest de base / Blocco di zavorra alla base					
		4,5	0,51	0,9	5000
			5,8	0,4	1,5
Bloque apoyo de base / Base support block / Grundballastblöcke / Bloc de appui de base / Blocco di appoggio alla base					
	2	0,5	2	5000	
Niveladores / Levellers / Spindel pyramide / Niveleurs / Piedi regolabile					
	1,20	1,20	0,90	250	
Traslacion / Travelling bogies / Kranfahren / Traslacion / Traslazione					
	1,15	1,25	0,45	505	
	1,15	0,25	0,45	450	

Angaben gemäß Hersteller. Angaben und Informationen ohne Gewähr. Irrtum und Änderung vorbehalten. Haftung ausgeschlossen. Juni 2026.