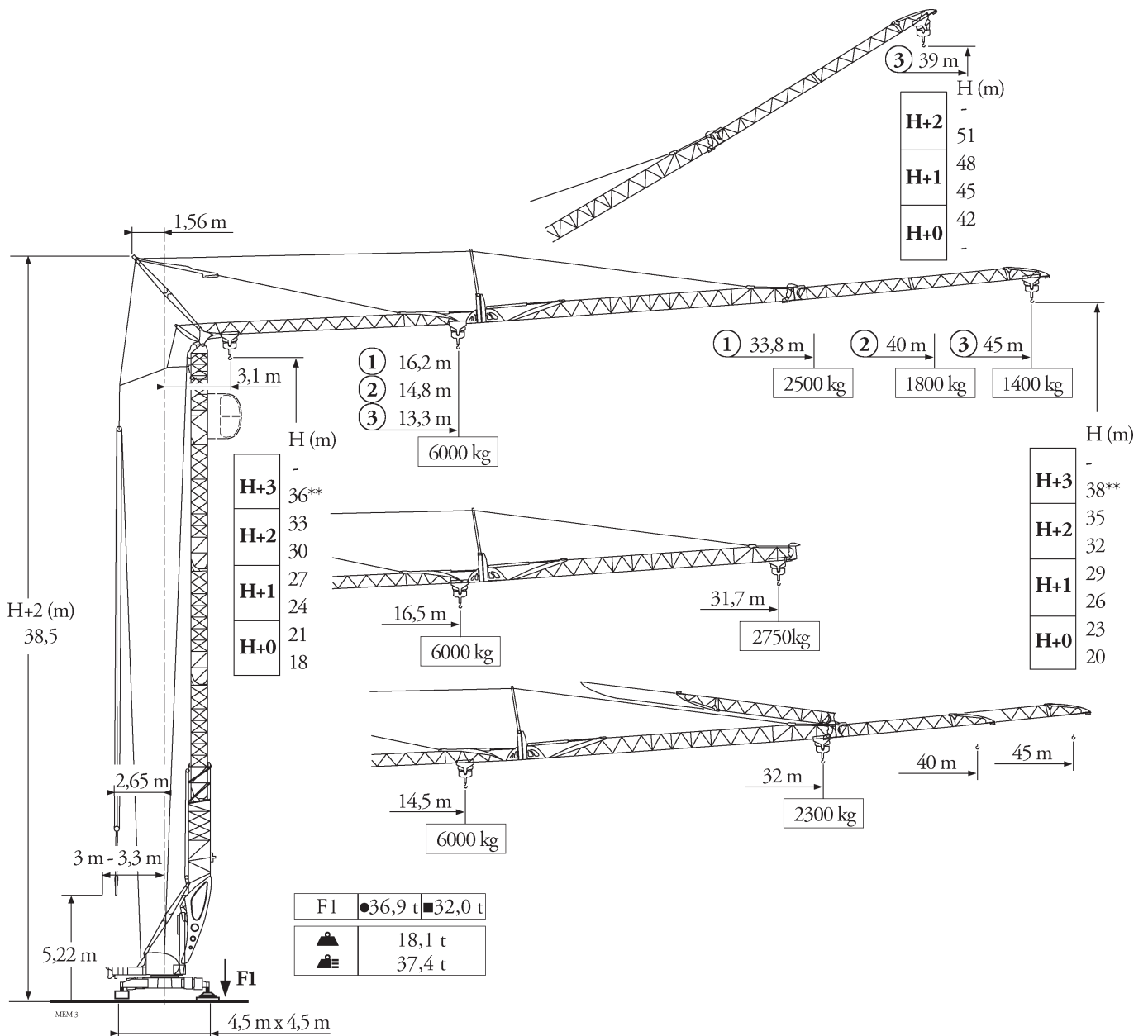


# Potain

## Igo T85 A

max. Ausladung:	45,00 m
Spitzenlast:	1.250 kg
max. Traglast:	6.000 kg
max. Hakenhöhe:	38,00 m

POTAIN IGO T 85 A



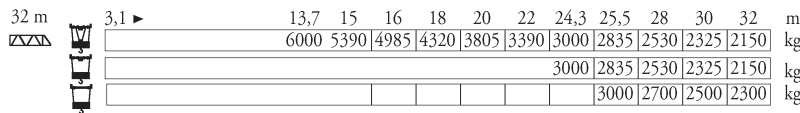
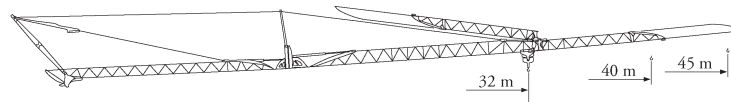
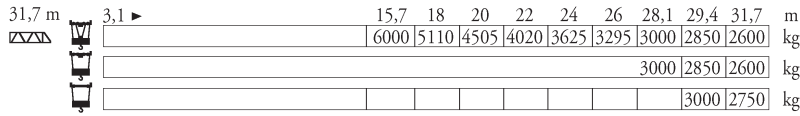
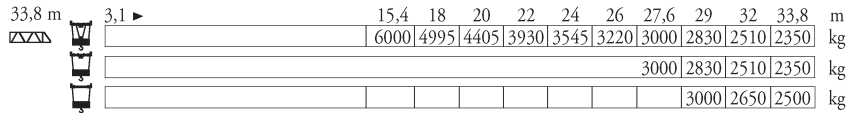
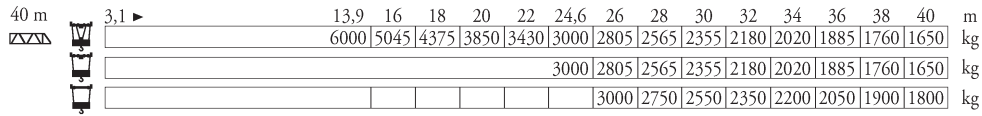
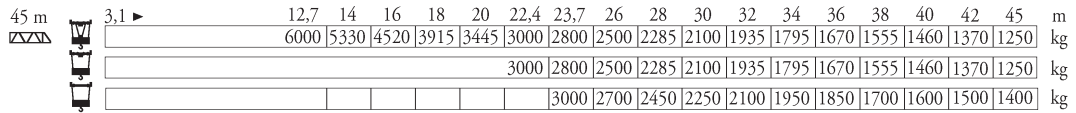
Angaben gemäß Hersteller. Irrtum und Änderungen vorbehalten. Erstellt im April 2016.

# Turmdrehkrane

## POTAIN IGO T 85 A

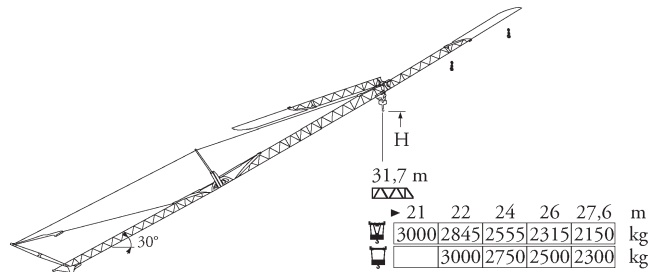
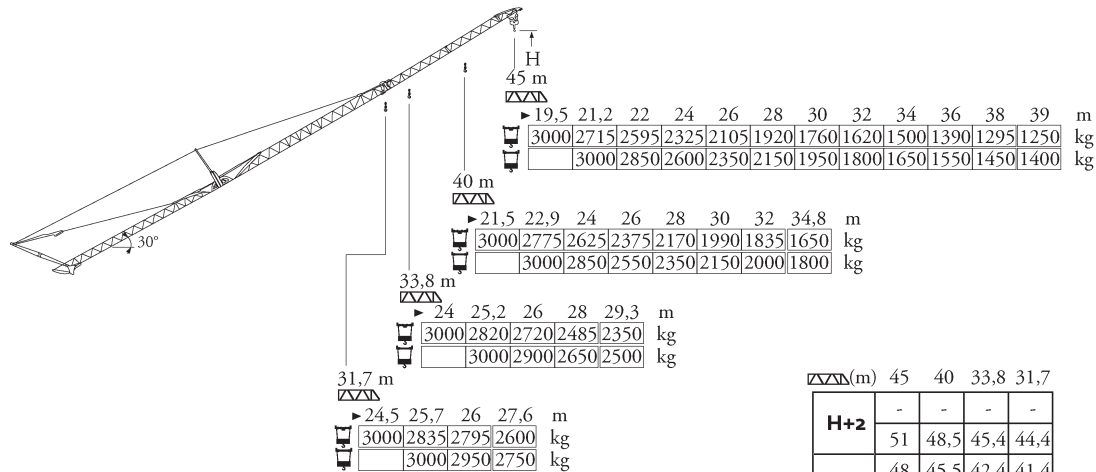
Courbes de charges  
Lastkurven  
Load diagrams  
Curvas de cargas  
Curve di carico  
Curva de cargas  
Диаграммы грузоподъемностей

MEM 3



Flèche relevée  
Ausleger in Steilstellung  
Luffing jib  
Flecha izada  
Braccio impennato  
Lança inclinada  
Маховая стрела

MEM 4



∇(m)	45	40	33,8	31,7
H+2	-	-	-	-
H+1	51	48,5	45,4	44,4
	48	45,5	42,4	41,4
H+0	45	42,5	39,4	38,4
	42	39,5	36,4	35,4
	-	-	-	-

FR

Réactions en service  
Réactions hors service



A vide sans lest (ni train de transport) avec flèche et hauteur maximum.



Poids total du lest

DE

Reaktionskräfte in Betrieb  
Reaktionskräfte außer Betrieb

Ohne Last, Ballast (und Transportachse), mit Maximalausleger und Maximalhöhe.

Ballast-Gesamtgewicht.

EN

Reactions in service  
Reactions out of service

Without load, ballast (or transport axes), with maximum jib and maximum height.

Gross ballast weight.

ES

Reacciones en servicio  
Reacciones fuera de servicio

Sin carga, sin lastre, (ni tren de transporte), flecha y altura máxima.

Peso total del lastre.

IT

Reazioni in servizio  
Reazioni fuori servizio

A vuoto, senza zavorra (ne assali di trasporto) con braccio massimo e altezza massima.

Peso totale della zavorra.

PT

Reacções em serviço  
Reacções fora de serviço

Sem carga (nem trem de transporte) - sem lastro com lança e altura máximas.

Peso total do lastro.

RU

Реакции при работе  
Реакции в покое

Вес без груза, балласта (или транспортных осей), с максимальной длиной стрелы и максимальной высотой.

общий вес груза

# POTAIN IGO T 85 A

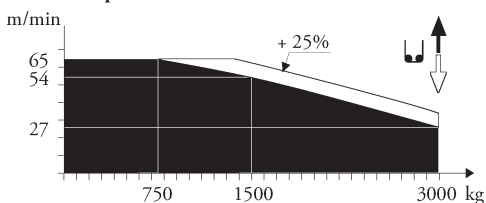
Mécanismes  
Antriebe  
Mechanisms  
Mecanismos  
Meccanismi  
Mecanismos  
Механизмы

MEM 7

Symbol	Model	Unit	U					UU					ch-PS hp	kW
			3,2	16	27	54	65	1,6	8	13,5	27	32,5		
▲	20 LVF 15 Optima	m/min kg	3000	3000	3000	1500	750	6000	6000	6000	3000	1500	20	15
◀▶	5 DVF 5	m/min	15 - 30 - 55 (0 → 2000 kg)					- 15 - 30 - 40 (2000 → 6000 kg)					5,5	4
⦿	RVF 151 Optima+	tr/min U/min - rpm	0 → 0,8										5,5	4
◀▶	TVF 324	m/min	25										2 x 4	2 x 3

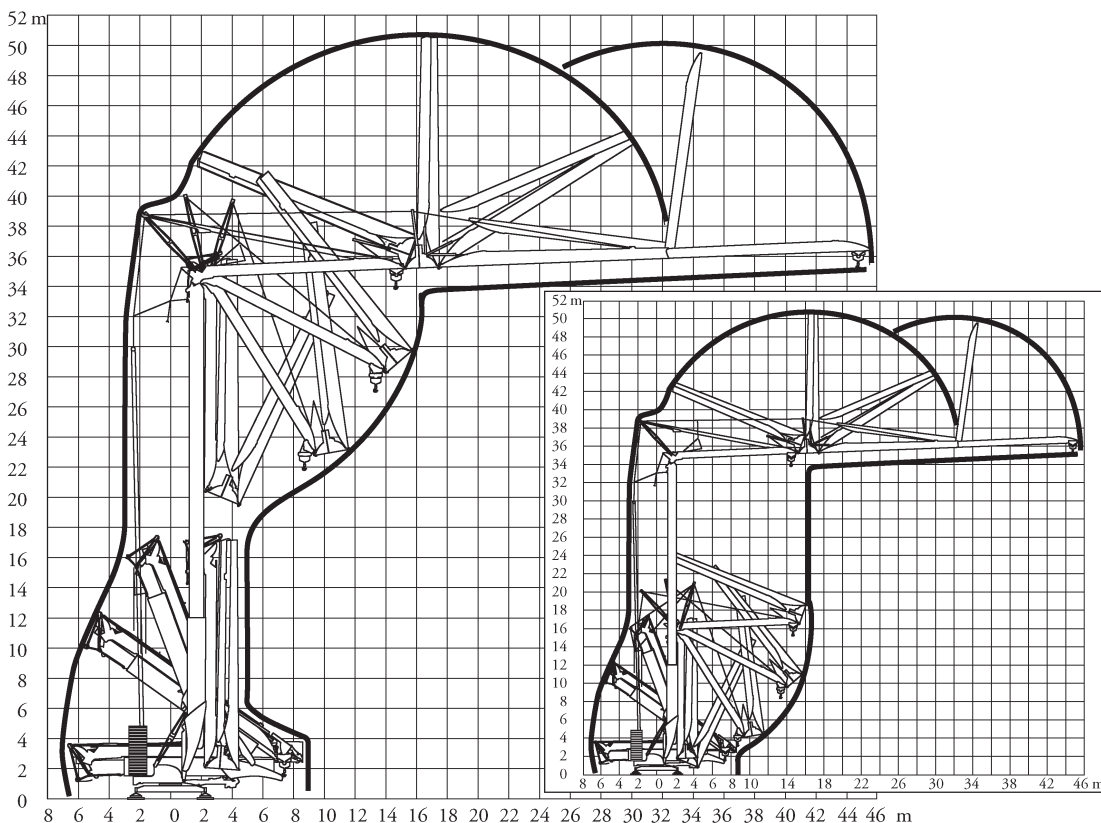
IEC 60204-32	kVA
400 V (+10% -10%) 50 Hz	20 LVF 15 : 31 kVA
480 V (+6% -10%) 60 Hz	20 LVF 15 : 31 kVA

20 LVF 15 Optima



Montage  
Montage  
Erection  
Montaje  
Montaggio  
Montagem  
Монтаж

MEM 3



- |                  |             |            |              |               |               |                           |
|------------------|-------------|------------|--------------|---------------|---------------|---------------------------|
| <b>FR</b>        | <b>DE</b>   | <b>EN</b>  | <b>ES</b>    | <b>IT</b>     | <b>PT</b>     | <b>RU</b>                 |
| ▲ Levage         | Heben       | Hoisting   | Elevación    | Sollevamento  | Elevação      | Подъем                    |
| ◀▶ Distribution  | Katzfahren  | Trolleying | Distribución | Distribuzione | Distribuição  | Перемещение каретки       |
| ⦿ Orientation    | Schwenken   | Slewing    | Orientación  | Rotazione     | Rotação       | Поворот                   |
| ◀▶ Translation   | Kranfahren  | Travelling | Traslación   | Traslazione   | Translação    | Перемещение крана         |
| i Nous consulter | Auf Anfrage | Consult us | Consultarnos | Consultateci  | Consultar-nos | Проконсультируйтесь у нас |

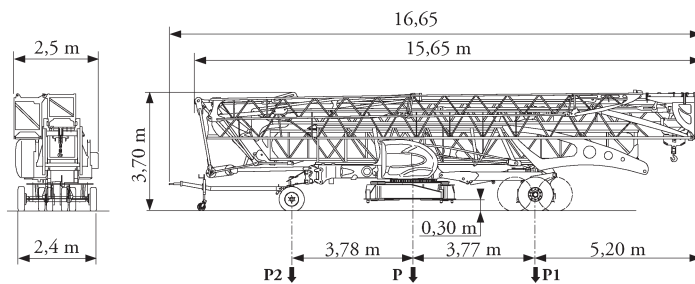
Angaben gemäß Hersteller. Irrtum und Änderungen vorbehalten. Erstellt im April 2016.

# Turmdrehkrane

## POTAIN IGO T 85 A

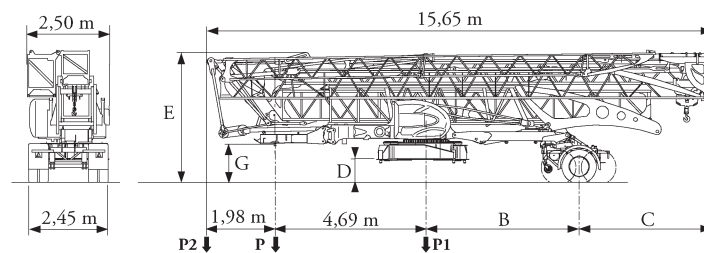
Transport  
Transport  
Transport  
Transporte  
Trasporto  
Transporte  
Транспортировка

MEM 4



	Km/h	P (kg)	P1 (kg)	P2 (kg)
DJ100/S120	10	19360	11491	7869
DJ105/S125	25	19650	11701	7949

... \*\*



	Km/h	B (m)	C (m)	D (m)	E (m)	G (m)	P (kg)	P1 (kg)	P2 (kg)
SL121/J135	25	4,20	4,78	0,70	4,10	1,30	20200	12800	7400
SL122/J215M	80	3,21	5,77	0,60	4,00	1,20	21050	15075	5975

... \*\*

**FR**

\*\*

Voir documentations techniques.

**DE**

Siehe technische Dokumentation.

**EN**

See technical documentations.

**ES**

Consulte la documentación técnica.

**IT**

Vedere la documentazione tecnica.

**PT**

Consultar documentações técnicas.

**RU**

см. техническую документацию



Document commercial non contractuel. Pour toute information technique se référer à la notice correspondante.

Unverbindliches Vertriebsdokument. Für technische Informationen, siehe die entsprechenden Anweisungen.

This commercial document is not legally binding. For any technical information, please refer to the corresponding instructions.

Documento commercial no contractuel. Para cualquier información técnica, ver la noticia correspondiente.

Documento commerciale non vincolante, per tutte le informazioni tecniche fare riferimento al catalogo istruzioni.

Documento comercial não contratual. Para qualquer informação técnica complementar consultar as respectivas instruções.

Этот коммерческий документ не является юридически обязательным. Для получения технической информации, см. соответствующие инструкции.